

Daily Weather Update

Coastal Area Around The Sri Lanka

Information Fusion Center-Colombo



Information Fusion Center
Colombo
Sri Lanka

Date 2026.02.15

The logo of the Information Fusion Centre (IFC) is a circular emblem. The top half is a maroon semi-circle with the words 'INFORMATION FUSION CENTRE' in white, sans-serif, uppercase letters. Below this is a white semi-circle containing a map of Sri Lanka. The bottom half is a maroon semi-circle with the words 'COLOMBO - SRI LANKA' in white, sans-serif, uppercase letters. The entire logo is centered on the page.

WEATHER FORECAST FOR SEA AREAS AROUND THE ISLAND DURING NEXT 24 HOURS

Issued at 05.30 a.m. on 15 February 2026



**DEPARTMENT OF METEOROLOGY
SRI LANKA**

CONDITION OF THE RAIN

Showers or thundershowers will occur at times in the sea areas off the coast extending from Galle to Batticaloa via Hambantota and Pottuvil. Showers or thundershowers may occur at a few places in the other sea areas around the island in the evening or night.

WINDS

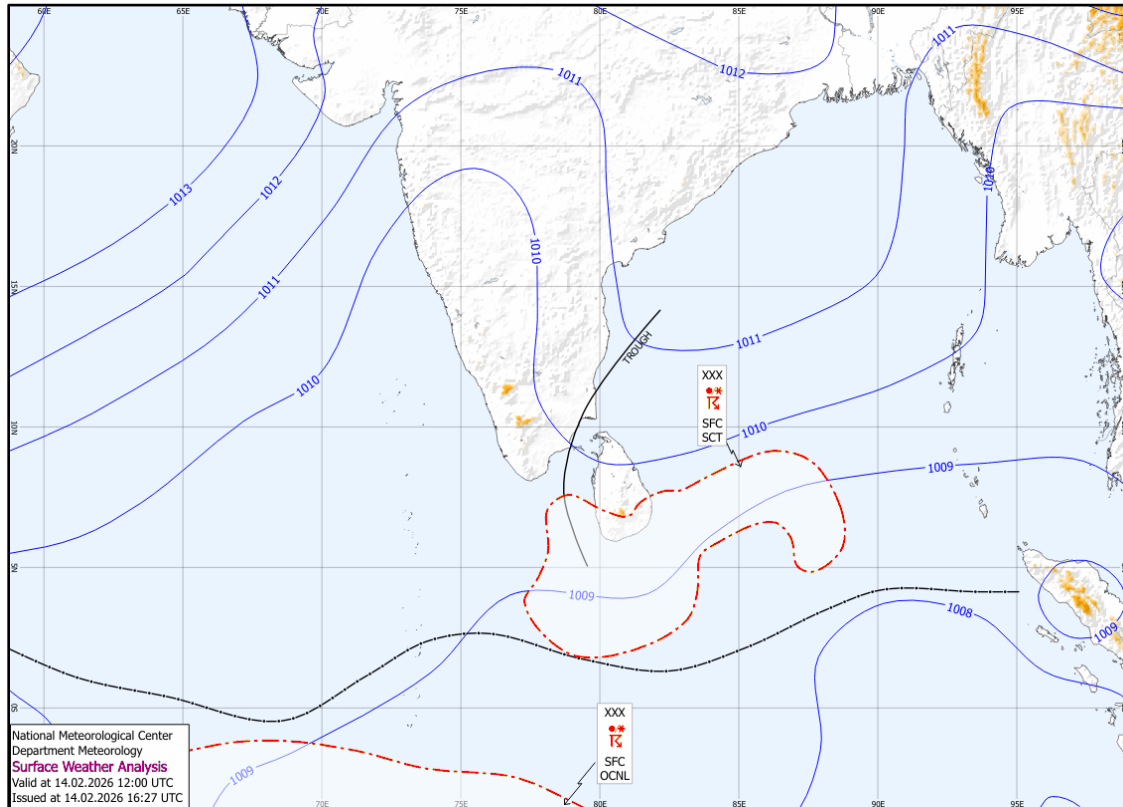
Winds will be north-easterly and wind speed will be (30-40) kmph. Wind speed can increase up to (45-50) kmph at times in the sea areas off the coast extending from Kaluthara to Mannar via Puttalam and from Matara to Pottuvil via Hambantota.

STATE OF SEA

The sea areas off the coast extending from Kaluthara to Mannar via Puttalam and from Matara to Pottuvil via Hambantota will be fairly rough at times. Other sea areas around the island will be moderate.

Temporarily strong gusty winds and very rough seas can be expected during thundershowers

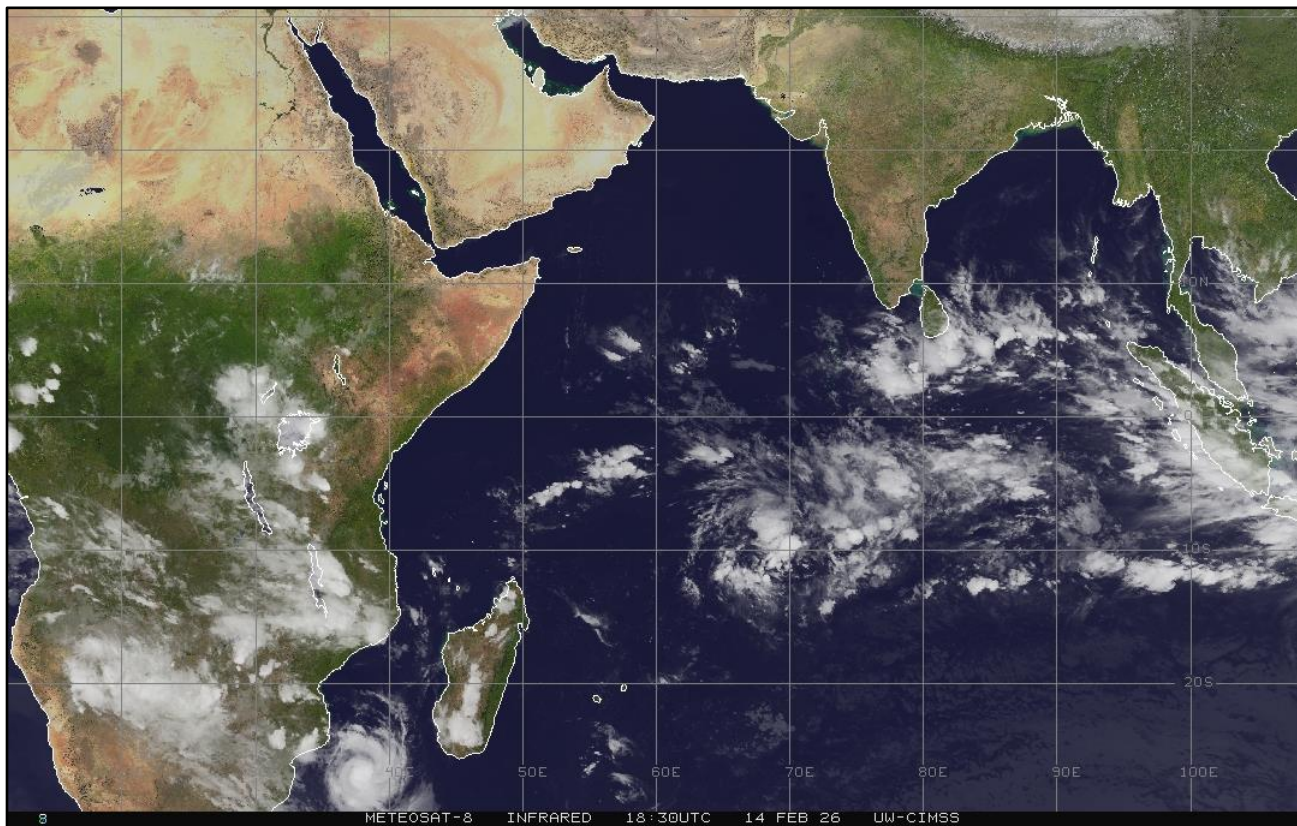
SURFACE ANALYSIS CHART



This analysis charts show the surface pressure pattern over Sri Lanka and the surrounding area. They display isobars (lines of equal pressure) and indicate areas of high (H) and low pressure (L) along with their central pressure value. Isobars are represented by solid blue lines, spaced every 1 hPa. High pressure is usually associated with mainly dry, settled weather with light winds, while low pressure is normally associated with unsettled weather, which is often wet and windy. The lower the pressure, generally the stronger the winds and the heavier the rain.

The map shows Coordinated Universal Time (UTC) and the local time is UTC+5.30.

SATELLITE IMAGE



15-Feb-26

IFC -Colombo



Information Fusion Center
Colombo
Sri Lanka

THANK YOU

The Officer Incharge
Information Fusion Centre - Colombo
Naval Headquarters, Colombo, Sri Lanka
+94 11 719 480 6
+94 74 120 4829
ifc@navy.lk
ifc.cbo@gmail.com